

# NABCA CAMPUS AND CENTER ADMINISTRATOR'S SURVEY PART III

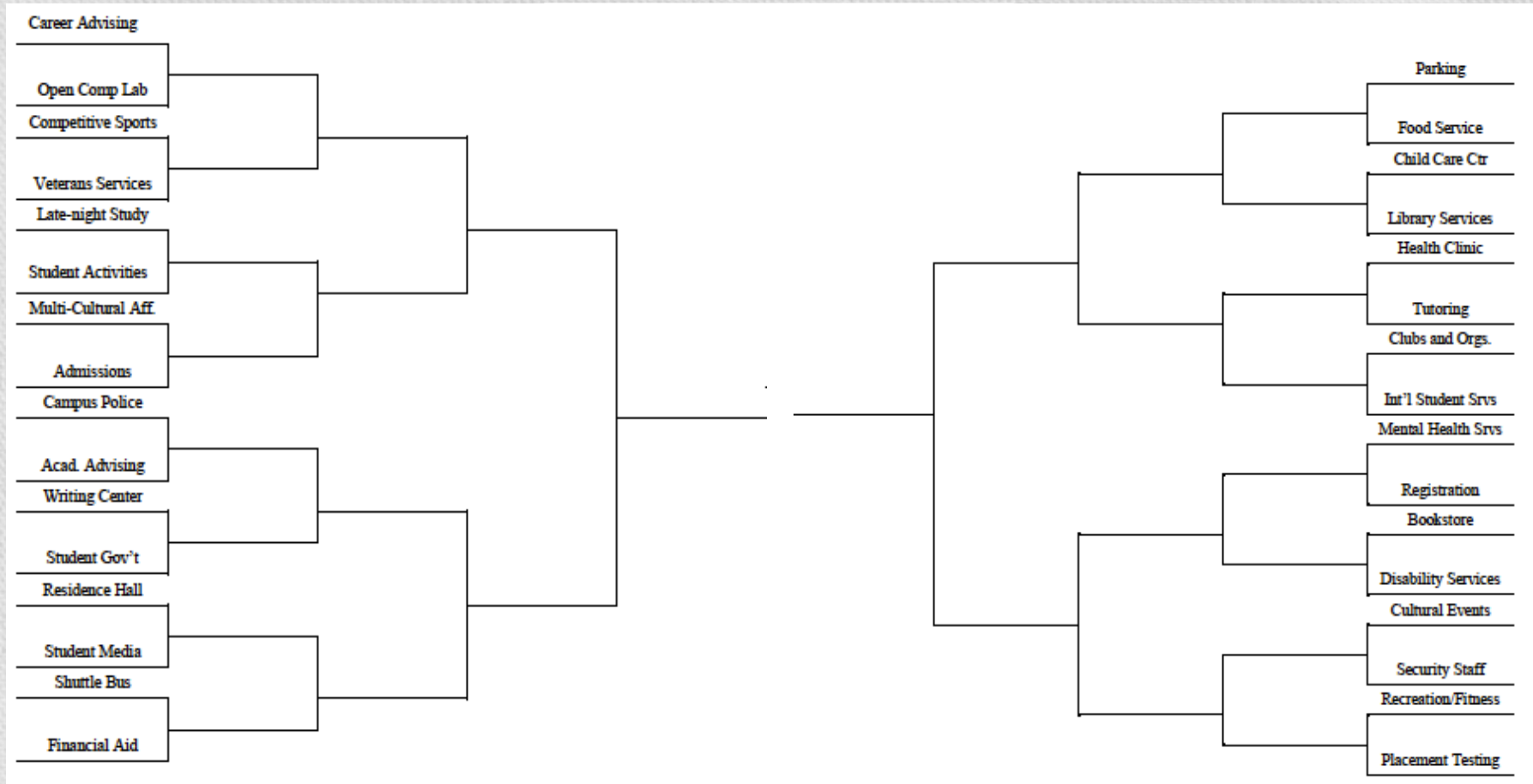
April 11, 2013

Long Branch, New Jersey

Dr. Dennis Huffman,  
Prince George's Community College

Dr. Phyllis Bebko,  
Florida Atlantic University

# April Madness: NABCA Student Services Brackets





# Phase III: Student Support Services

87 respondents

## Breakdown by Campus Headcount

13.8% - under 200

21.8% - 201-500

14.9% - 501-1000



25.3% - 1001-2500

24.1% - over 2501

# Breakdown by Campus Offerings

47.1% - 2 yr. lower

---

13.8% - 2 yr. upper

10.3% - 4 yr. baccalaureate

27.6% - 2/4 yr. plus grad.

10.3% - workforce

5.7% - other



# Mandatory Fees Charged

- 62% Student Activities
- 61% Technology
- 41% General Services
- 31% Parking or Transportation Access
- 21% Capital Improvement or Construction
- 20% Health or Counseling
- 11% Recreation or Wellness
- 10% Athletics or Sports

## 10 Must Have's

- 93.1% Academic Advising
- 93.0% Registration
- 87.2% Open Use Computer Lab
- 86.0% Admissions
- 84.2% Public Safety with security or police
- 82.6% Parking
- 82.4% Testing
- 72.1% Student Activities and Events
- 71.3% Tutoring
- 69.8% Financial Aid



# Fees and Services Alignment

	Services	Fees
• 72.1%	Student Activities	• 62%
• 87.2%	Computer Labs	• 61%
• 82.6%	Parking	• 31%
• 32.6%	Recreation/Wellness	• 11%
• 14.5%	Competitive Sports	• 10%
• 9.6%	Health; 39.3% Counseling	• 20%

## 10 Least Likely

- 9.6% Health Services
- 9.6% Residence Halls
- 13.3% Childcare
- 14.5% Competitive Sports
- 26.2% Student Media
- 26.5% Late Night Study
- 29.3% Multicultural Affairs
- 32.1% International Student Services
- 32.6% Food Service
- 32.6% Recreation/Wellness



# 11 Menza Menza

- 62.8% Disability Services
- 58.3% Library Services
- 57.1% Clubs and Organizations
- 56.3% Writing Center
- 54.1% Cultural Events
- 50.6% Career Development Services
- 48.8% Veterans Services
- 47.1% Bookstore
- 45.3% Student Government
- 39.3% Counseling

# Services Provided Nearby

- 26.7% Veterans Services
- 26.2% International Student Services
- 23.8% Student Media
- 23.3% Student Government
- 23.2% Multicultural Affairs
- 21.8% Career Development
- 21.7% Competitive Sports
- 21.4% Library Services
- 21.4% Counseling
- 20.9% Disability Services



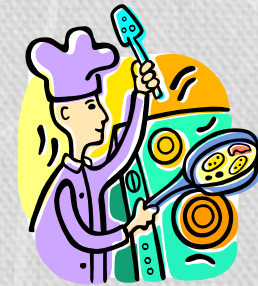
# Online Services

- 37.9% Bookstore
- 32.6% Admissions
- 28.6% Library
- 26.7% Financial Aid
- 24.4% Registration
- 23.0% Career Development



# Most Common Shared Services – all sites

- Security (37.9%)
  - Staff (24.1%)
  - Officers (13.8%)
- Food Service (17.4%)
- Parking (16.3%)
- Library (14.3%)
- Bookstore (11.5%)

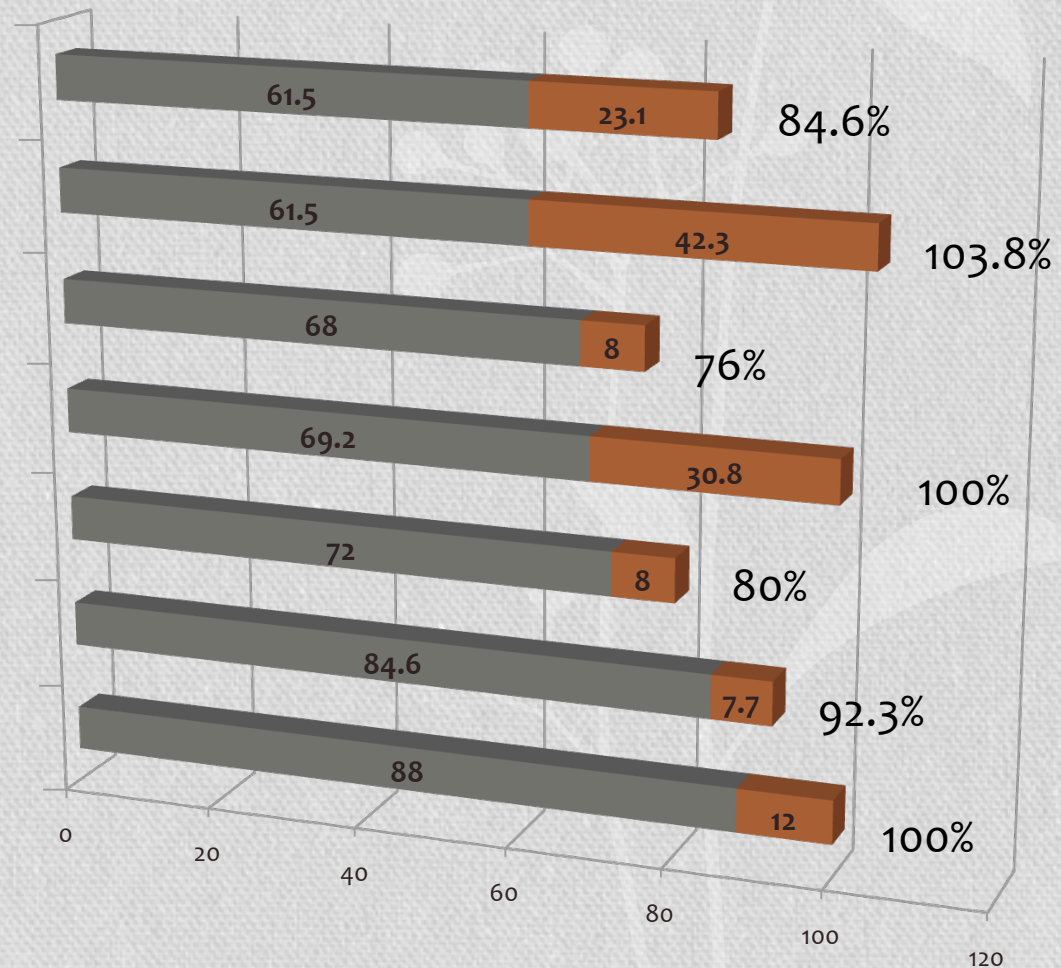




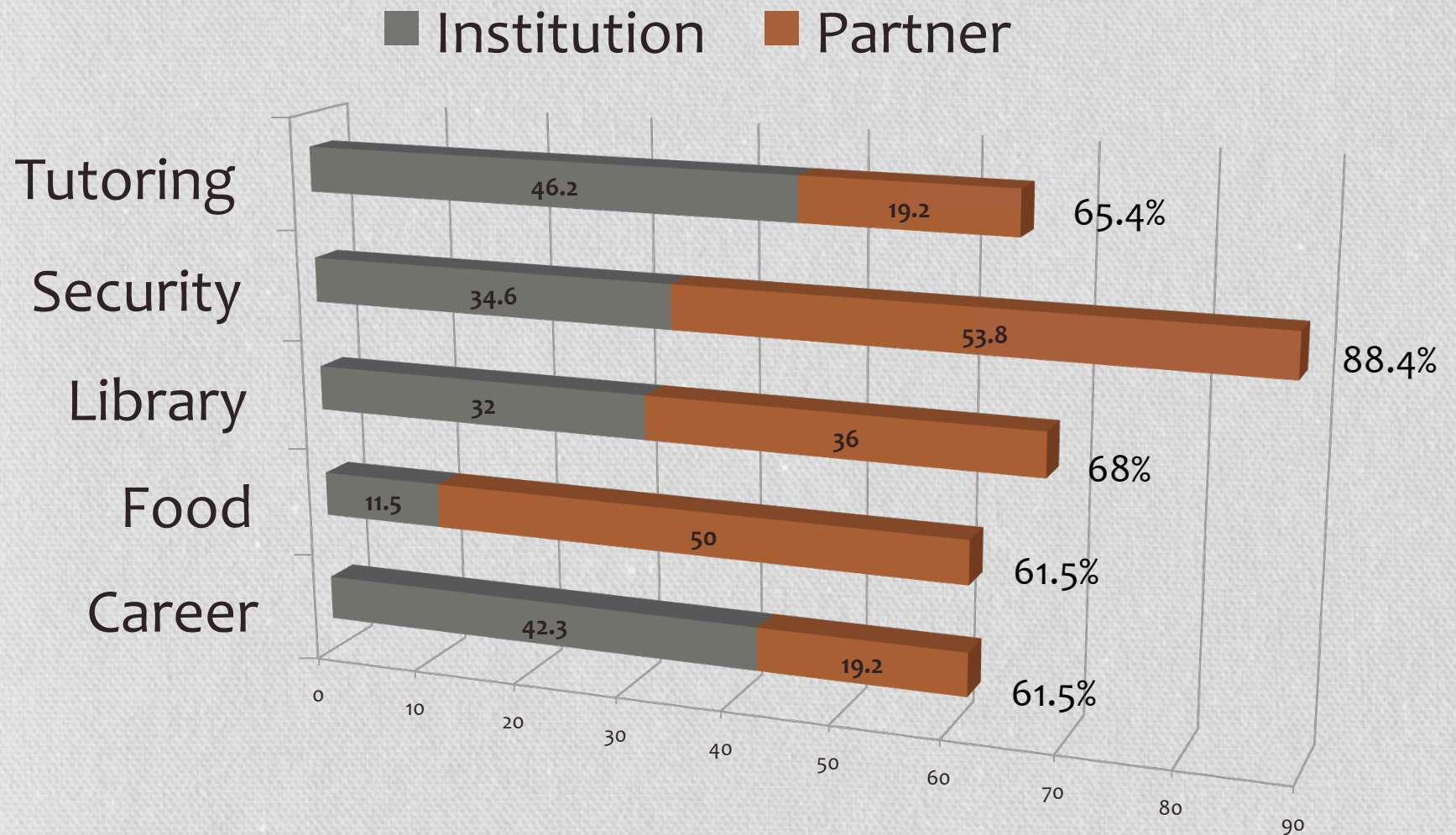
# Shared Services on 26 Co-Located Campuses

■ Institution ■ Partner

Student Activities  
Parking  
Testing  
Open Computer Lab  
Admissions  
Academic Advising  
Registration



# Additional Services Offered by Partners at Co-Located Sites





# Services by Headcount

				Career Development Cultural Events Food Service/Café Counseling Recreation/Fitness Student Govt. Veterans Services
			Bookstore Clubs and Organizations Library Services Security Staff	Bookstore Clubs and Organizations Library Services Security Staff
		Disability Services Student Activities Writing Center	Disability Services Student Activities Writing Center	Disability Services Student Activities Writing Center
	Admissions Financial Aid	Admissions Financial Aid	Admissions Financial Aid	Admissions Financial Aid
Academic Advising Open Computer Labs Parking Registration Testing	Academic Advising Open Computer Labs Parking Registration Testing	Academic Advising Open Computer Labs Parking Registration Testing	Academic Advising Open Computer Labs Parking Registration Testing	Academic Advising Open Computer Labs Parking Registration Testing
Under 200	201-500	501-1000	1001-2500	2501-5000

# Services by Headcount

<1000

		Disability Services Student Activities Writing Center
	Admissions Financial Aid	Admissions Financial Aid
Academic Advising Open Computer Labs Parking Registration Testing	Academic Advising Open Computer Labs Parking Registration Testing	Academic Advising Open Computer Labs Parking Registration Testing
Under 200	201-500	501-1000



# Services by Headcount

>500

Career Development  
 Cultural Events  
 Food Service/Café  
 Counseling  
 Recreation/Fitness  
 Student Government  
 Veterans Services

Bookstore  
 Clubs and Organizations  
 Library Services  
 Security Staff

Bookstore  
 Clubs and Organizations  
 Library Services  
 Security Staff

Disability Services  
 Student Activities  
 Writing Center

Disability Services  
 Student Activities  
 Writing Center

Disability Services  
 Student Activities  
 Writing Center

Admissions  
 Financial Aid

Admissions  
 Financial Aid

Admissions  
 Financial Aid

Academic Advising  
 Open Computer Labs  
 Parking  
 Registration  
 Testing

Academic Advising  
 Open Computer Labs  
 Parking  
 Registration  
 Testing

Academic Advising  
 Open Computer Labs  
 Parking  
 Registration  
 Testing

501-1000

1001-2500

2501-5000